



*Informative notice

Novopeldaño Eclipse® Aura



It has been 4 years since we launched the Eclipse® family with the Novorodapié Eclipse®. Since then, neither the new solutions we offer nor market demand have stopped growing. In 2022, our family will expand further with a new concept in steps which, in line with current trends, offers unique indirect lighting in a step that is integrated into the building without a visible step.

Its minimalist design is married to its functional character, as it fulfills its main function of protecting the pavement edges. It is a trend-setting solution. This is why it is available in matt silver and matt black finishes and, for the first time, also in an exclusive matt white finish. Available in 10 and 12 mm heights, with a protective film on the exposed face and end caps to give the installation a perfect finish.


Applications

Novopeldaño Eclipse® Aura is a profile with a delicate design and minimalist appearance designed as a profile for stair nosing.

Due to its geometry, Novopeldaño Eclipse® Aura is perfect in environments where decoration and exquisite aesthetic care are essential, whether in the public areas (hotels, restaurants ...) or in the private sphere. Novopeldaño Eclipse® Aura is to be installed previous to work and is perfectly integrated into the pavement, being able to place an optional LED light.

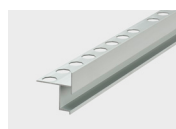
*Promotional atmosphere created using Novopeldaño Eclipse® Aura, showing a suggestion for one possible use of this product. EMAC® does not manufacture, sell or supply any LED strip whatsoever with the Novopeldaño Eclipse® Aura product. The choice of LED strip should be undertaken by the installer, taking into account the circumstances of the installation site.

Technical Features

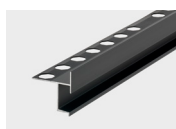

 DI 0085873272 (EU)
 WIPO107208 (US-MX)
 DI 202102261 (CL)

Material:	Anodized aluminum
Length:	2,5 m.l.
Dimensions:	h: 10 / 12 mm a: 1 mm b: 35,5 / 37,5 mm c: 10,3 mm d: 6,1 mm
Packaging:	12 u/box

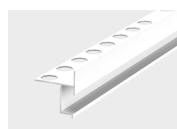
Finishes:



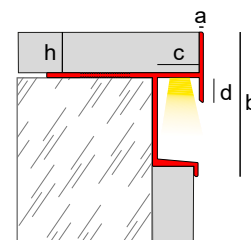
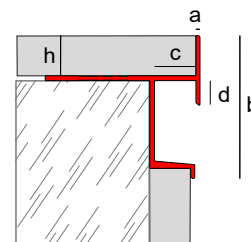
Matt silver - 13



Matt black - 90



Matt white - 142



Complementary pieces



Novopeldaño Eclipse® Aura has a special cover available to get a perfect installation.

Materials



Novopeldaño Eclipse® Aura is a profile made by extrusion of aluminum. The matt silver and matt black finish are anodized, improving the corrosion resistance, mechanical resistance and appearance of profiles. It has the quality seal Qualanod, which guarantees the quality of the process and the resulting profiles. This seal regulates several tests: appearance and color, thickness measurements, sealing and impregnation control, abrasion resistance, lightfastness, acetic saline chamber and nitric acid immersion.



The matt white finish has been lacquered and have a high quality and homogeneous surface. The lacquering has the quality seal Qualicoat, which guarantees the quality of the process and the final products.

The aluminum has excellent chemical, physical and mechanical properties. It is lightweight, tough, ductile, malleable and highly durable

Technical Features and tests

Alloy:	6063 - T5
Fire resistance:	M0 (UNE 23-727-90)
Abrasion resistance:	High
Lightfastness:	Excellent
Appearance and color:	EN 12373-1
Quality seal:	Qualanod Qualicoat

Installation

1. Spread a big amount of thin-set mortar on the surface of the riser.
2. Place the tile on the riser and press to get an optimal adherence.
3. Then, spread a big amount of thin-set mortar on the tread and align the profile on its vertex so it rests on the riser (Do not let overhang, the leverage may remove the step and the tiles). Then press so the thin-set mortar could pass through the mechanized holes of the anchoring wing. Be also sure you fill the inside of the profile to reinforce the installation.
4. Place one tile on the tread, align it to the profile and press to get a perfect adhesion. You can tap it softly with a rubber hammer
5. Clean the possible leftover material and let dry
6. After installing the profile you can install a self-adhesive LED strip to provide the profile with light.

If your installation runs along the entire step with the profile (U installation), corner joints can be satisfactorily solved by mitering, as shown below.



Mitered corner

Cleaning and maintenance

The product must be cleaned periodically with a soft cloth. If you use a neutral liquid cleaner, you must rinse the profile with cold water and dry it to remove the humidity excess. The persistent dirtiness can be removed by using cleaning approved agents lightly abrasive or a grid covered with polished powder neutral.

Steel wool, abrasive cleaners, souring products as well as strong acids (hydrochloric and perchloric), strong bases (caustic soda or ammonia) or carbonated solutions are not recommended. Citric acid is neither recommended because it dissolves the protective layer of the surface of aluminium. Waxes, petrolatum, lanolin or similar substances are not appropriate. Solvents containing haloalkanes (hydrofluoroether and chlorinated solvents) and curing accelerators containing chlorides should not be used (use special accelerators free of chlorides).

Technical information

You can find out more information about the technical features of EMAC®'s products by downloading its Technical File in www.emac.es.

If you have any query, please contact our Technical Department in tecnico@emac.es.